



Assessing Your Governance Work



Webinar Series: 2022/2023
Presented by: Angela L. Irwin, Owner
AirWin Educational Services, LLC
January 17, 2023

1



A 2022 Review . . .

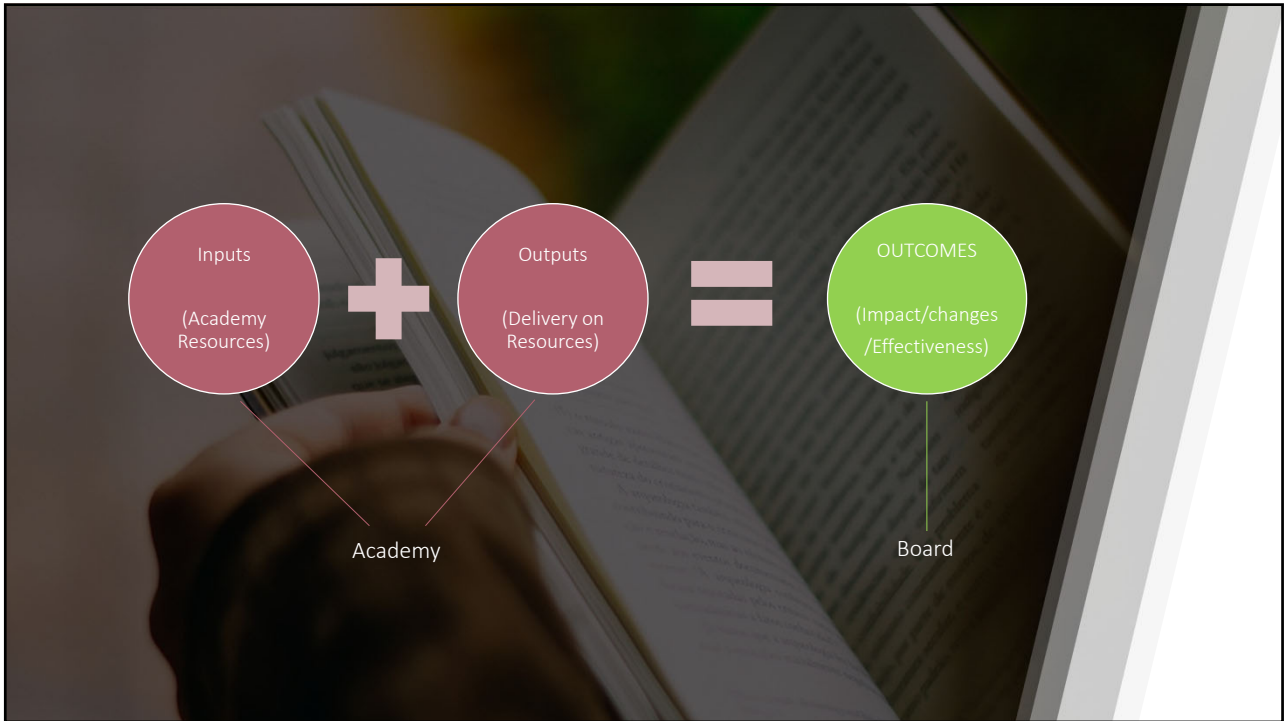


Refresher on Prior Sessions

2



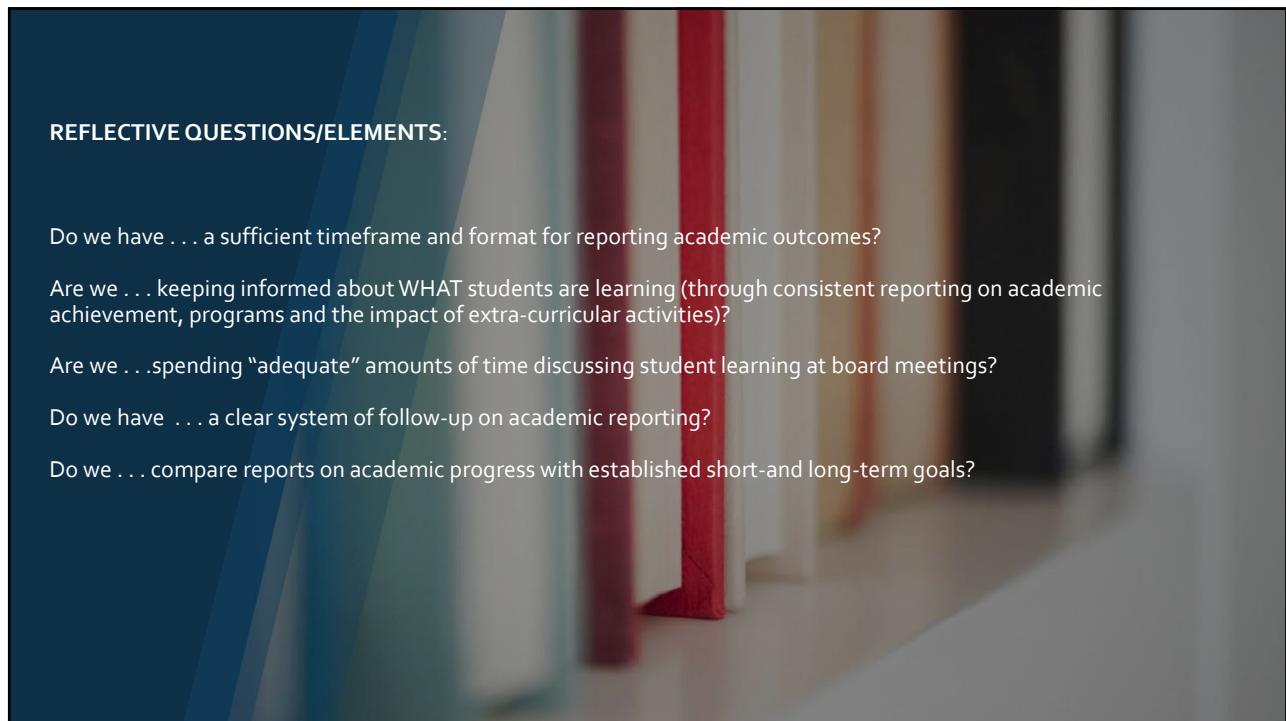
3



4



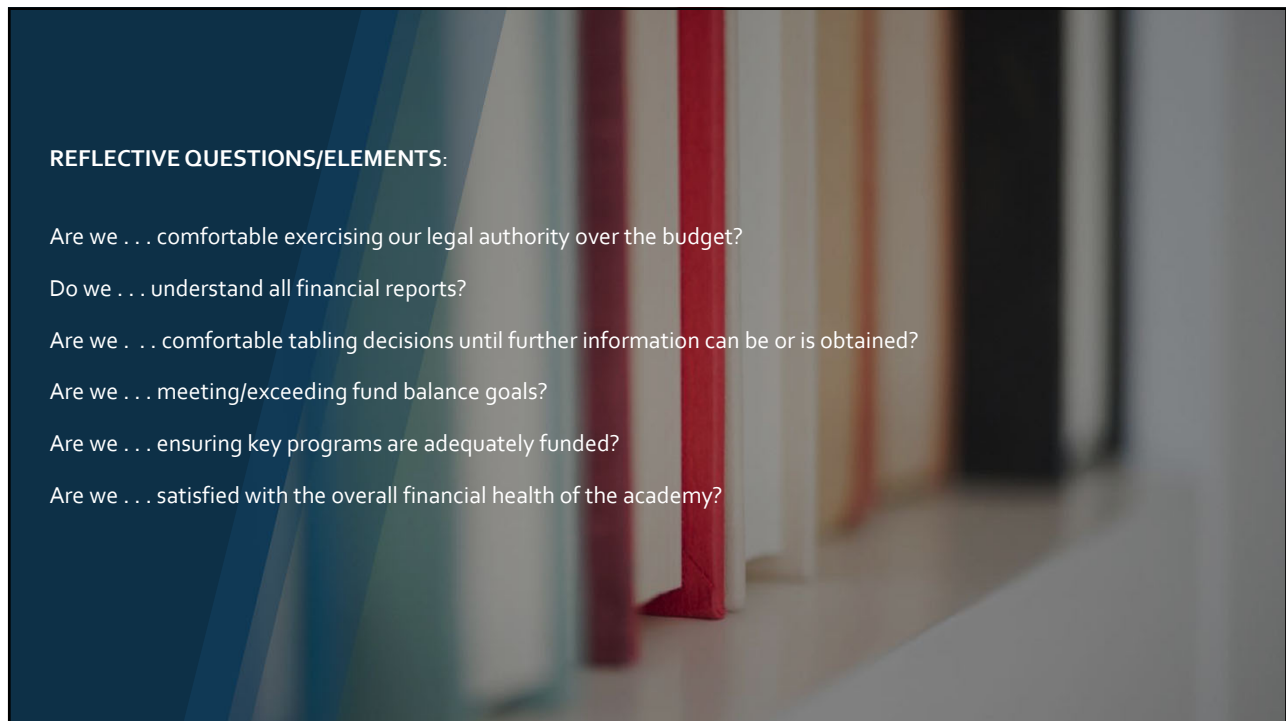
5



6



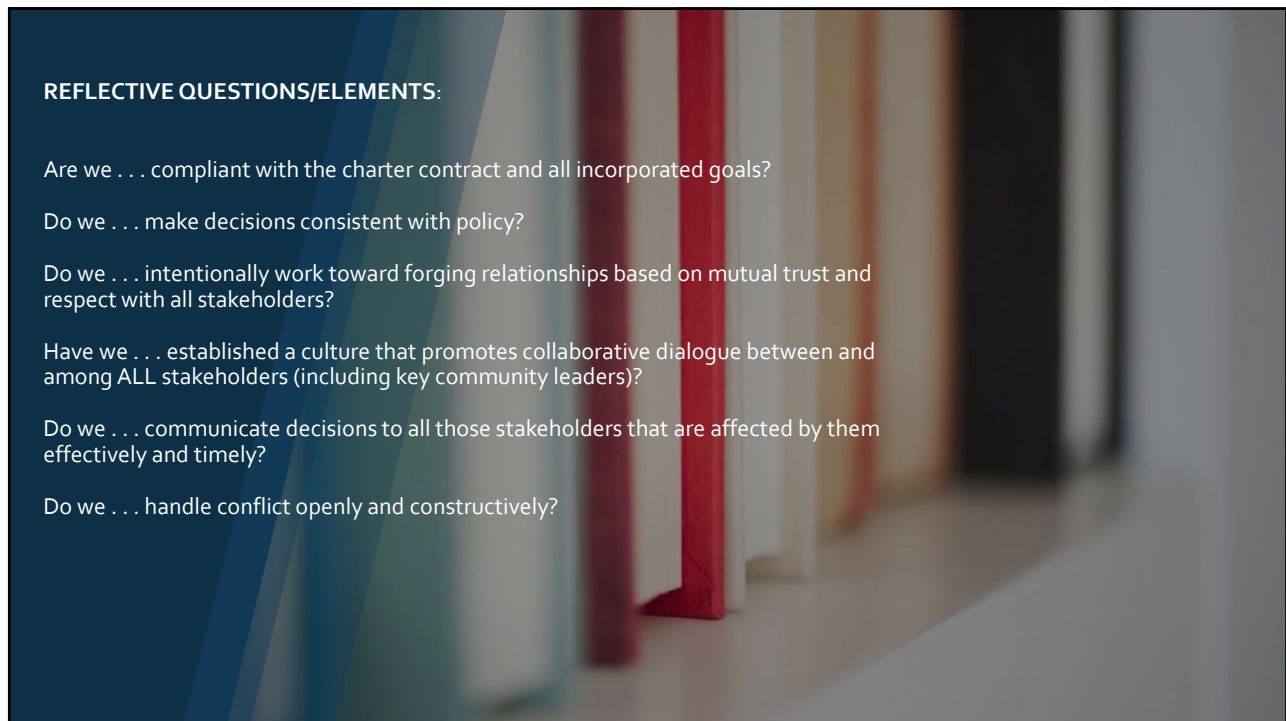
7



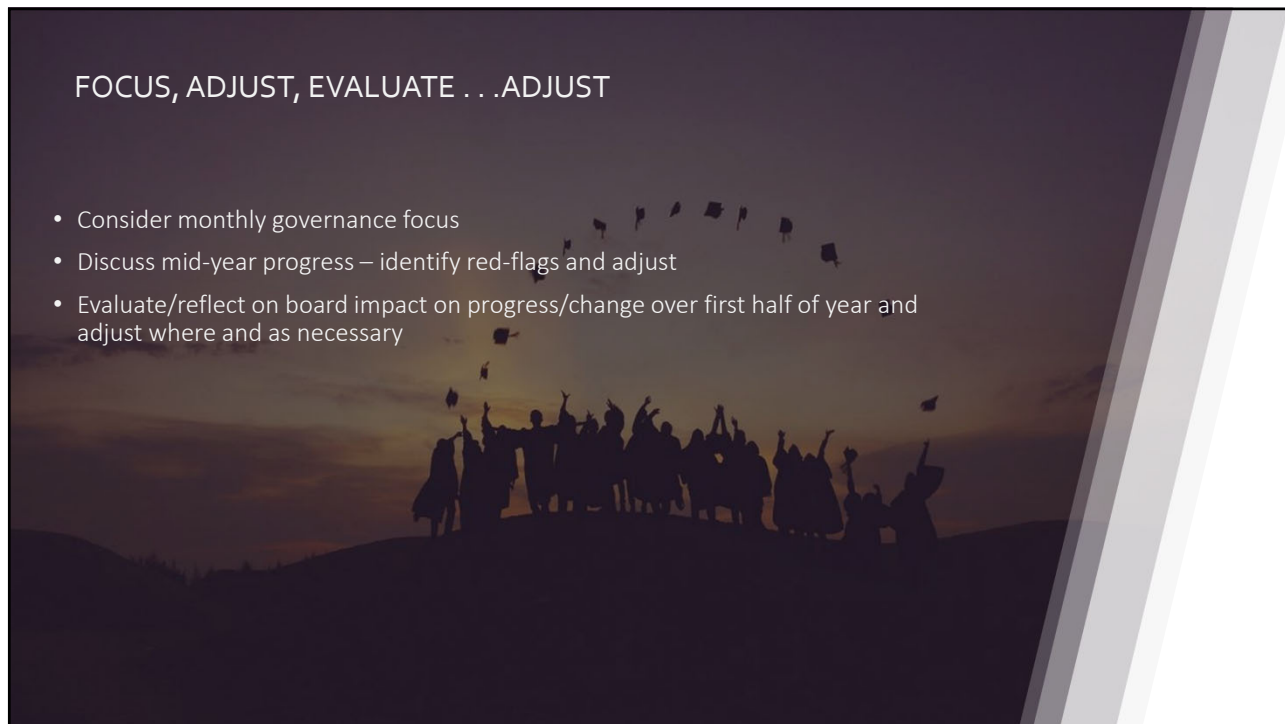
8



9



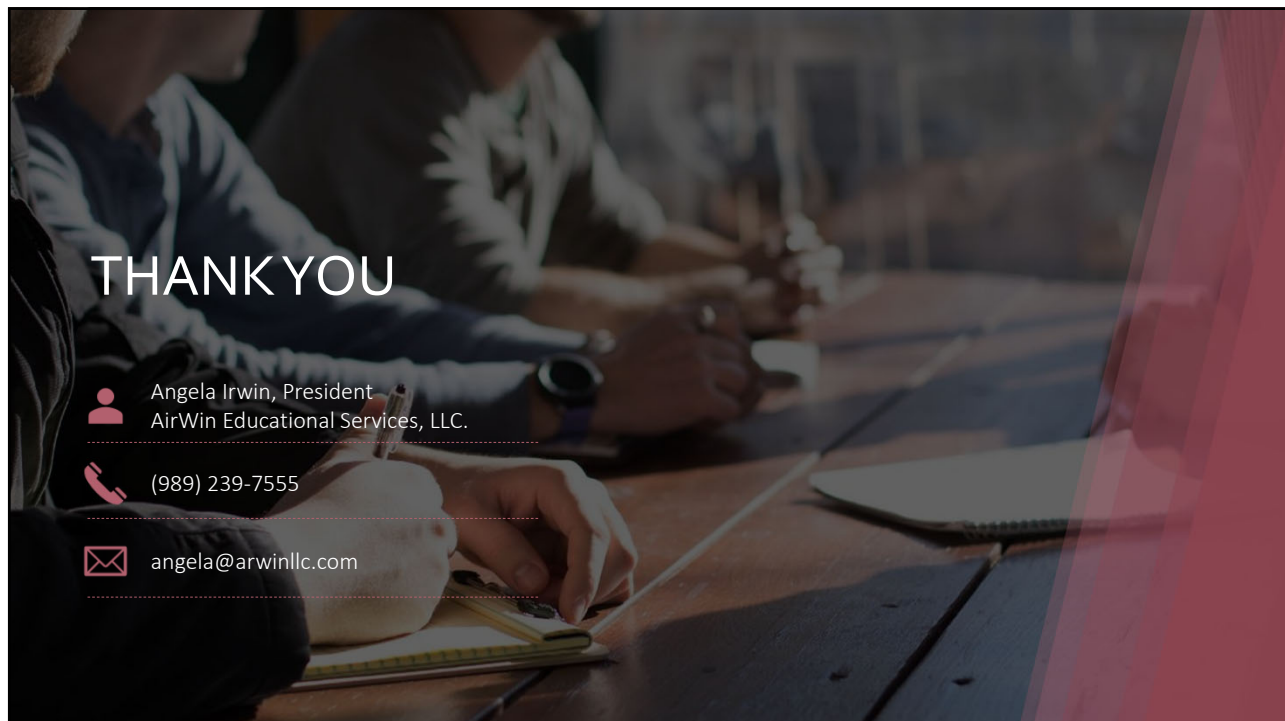
10




FOCUS, ADJUST, EVALUATE . . .ADJUST


- Consider monthly governance focus
- Discuss mid-year progress – identify red-flags and adjust
- Evaluate/reflect on board impact on progress/change over first half of year and adjust where and as necessary


11



THANK YOU

 Angela Irwin, President
AirWin Educational Services, LLC.

 (989) 239-7555

 angela@arwinllc.com

12